

V202506-EN

MiMA[®]
Min. Space Max. Performance

BANYITONG SCIENCE & TECHNOLOGY DEVELOPING CO.,LTD.

Since 1994

Electric Counterbalance Forklift Truck

MK Series

Load Capacity: 1500kg-4000kg

MiMA[®]
Min Space,Max Performance



ΕΠΙΚΟΙΝΩΝΗΣΤΕ ΜΑΖΙ ΜΑΣ

PEBRO - ΑΦΟΙ ΠΕΤΡΟΓΙΑΝΝΗ
Αγίας Σοφίας, Θέση Μυλιαδίστα Ασπρόπυργος,
19300, Αττική, Ελλάδα

Mail: info@pebro.gr Τηλέφωνο: +30 2105595360


PEBRO
Storage Systems & Display Stands
Επίσημος εκπρόσωπος της
DEXION **SCHAEFER**

MK Series

Upgraded 4-wheel Electric Forklift(1.5t-4t)

PERFORMANCE

The drive motor adopts an advanced horizontal parallel arrangement, with the battery sinking to the bottom of the vehicle. It has a low center of gravity, good stability, and excellent turning smoothness and driving control comfort.

Adopting a new concept and novel streamlined appearance design, the visual effect is improved. The vehicle is compact and simple in appearance, strong and reliable.

LED headlights, turn signals, and warning lights are low in energy consumption, safe and reliable, and provide good lighting and warning for night operations.

COMFORT

Scientific ergonomically designed steering wheel and the seat is adjustable front and rear, providing the operator with the best driving position to choose.

The wide field of vision mast design, which is not easy to block the line of sight and provides the operator with a broad field of vision.

The new large-screen LED instrument has power display, timing and fault diagnosis functions. The human-computer interactive interface is simple and easy to understand, has excellent visibility, beautiful, elegant, and intuitive.

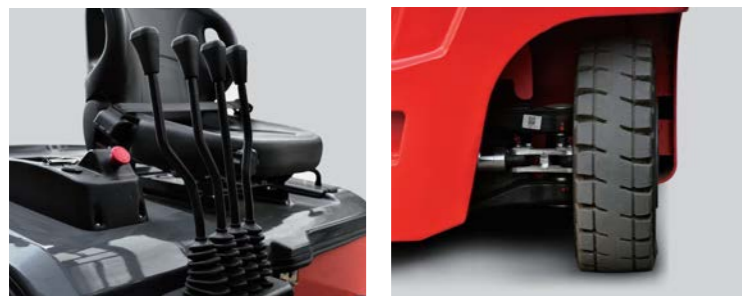


SAFETY

The automatic ascending&descending speed limit and descending buffer functions effectively ensure the safety of the operation, while ensuring that the goods and pallets do not impact the ground, effectively protecting the goods and the ground.

Equipped with an active driver presence safety monitoring OPS system, the operation safety is effectively improved.

The functions such as reverse braking and anti-slipping on slopes, making it safe and reliable.



INNOVATION

The internationally advanced MOSFET AC controller system enables the forklift's walking, steering, lifting, tilting and other actions to be controlled by computer programs.

The high-frequency MOSFET integrated controller ensures smooth and accurate driving, lifting control and excellent speed regulation performance.

Excellent motor-electronic control matching performance, with regenerative braking and regenerative energy (when the forklift is decelerating and going downhill, the drive motor is converted into a generator, and the battery is reverse-charged through the controller, which is energy-saving and efficient).

EFFICIENCY

The ultra-low roof guard design can meet the requirements of operating in ordinary containers and in highly limited space conditions.

The hydraulic system is equipped with side shifter to adjustment operations, which effectively improves operational convenience and thus improves working efficiency.

MAINTENANCE

The AC motor is maintenance-free, with no maintenance costs such as replacing carbon brushes. The AC power system has high efficiency, complete protection functions, built-in speed sensor, temperature sensor, high reliability and long life.

The battery is designed with side access, making it easy to replace and maintain the battery.



SPECIFICATION

Characteristics

1.1	Manufacturer	MiMA	MiMA
1.2	Model	MK	MK
	Technical code	MK15M	MK15S
1.3	Power type	Battery	Battery
1.4	Operation type	Seated	Seated
1.5	Load capacity	Q(kg)	1500
1.6	Load center	C(mm)	500
1.7	Front overhang	x(mm)	402
1.8	Wheelbase	y(mm)	1500

Tyre&Wheels

3.1	Tyre type	Pneumatic	Pneumatic
3.2	Tyre size, front	6.50-10-10PR	6.50×10-10PR
3.3	Tyre size, rear	16×6-8-10PR	16×6-8-10PR
3.4	Number of tyres, front/rear(x=drive wheel)	2X/2	2X/2
3.5	Tread(centre of tyre), front	b10(mm)	950
3.6	Tread(centre of tyre), rear	b11(mm)	900

Dimensions

4.1	Mast tilt angle, F/R	α/β(°)	6/10	6/10
4.2	Mast closed height	h1(mm)	Refer to the mast specification	Refer to the mast specification
4.3	Free lift height	h2(mm)	145	145
4.4	Lift Height	h3(mm)	3000	3000
4.5	Mast extended height(with load backrest)	h4(mm)	Refer to the mast specification	Refer to the mast specification
4.6	Overhead guard height	h6(mm)	2125	2125
4.7	Seaf SIP point ground clearance	h7(mm)	1100	1100
4.9	Height of traction pin from ground	h10(mm)	260	260
4.1	Overall length	L1(mm)	3297	3297
4.11	Length to fork face	L2(mm)	2227	2227
4.12	Overall width	b1/b2(mm)	1120	1120
4.13	Fork size	l/e/s(mm)	1070/100/35	1070/100/35
4.14	Installation level(ISO2328)	2A	2A	2A
4.15	Fork carriage width	b3(mm)	1040	1040
4.16	Fork outside width	b5(mm)	1040 ~ 200	1040 ~ 200
4.17	Ground clearance at mast, loaded	m1(mm)	100	100
4.18	Ground clearance at centre of wheelbase, loaded	m2(mm)	110	110
4.19	Min. stacking aisle width for pallet 1000×1200MM	mm	3595	3595
	Min. stacking aisle width for pallet 800×1200MM	mm	3790	3790
	Other stacking aisle width	mm		
4.2	Turning radius	Wa(mm)	1940	1940

Performance

5.1	Travel speed, loaded/unloaded	km/h	14.5/15	12/13
5.2	Lifting speed, loaded/unloaded	mm/s	365/440	335/400
5.3	Lowering speed, loaded/unloaded	mm/s	400/400	400/400
5.4	Max. traction(Load/unload)	N	11000	9500
5.5	Max. gradeability (Load/unload S2-2min)	%(tanθ)	15/25	12/13
5.6	Acceleration time, loaded/unloaded(10m)	S		
5.7	Service brake	Hydraulic	Hydraulic	Hydraulic
5.8	Parking brake	Mechanical	Mechanical	Mechanical

Drive

6.1	Drive motor rating S2=60	kw	AC8	AC8
6.2	Lift motor rating S3=15%	kw	AC10.6	AC10.6
6.3	Lead-acid battery voltage/ Nominal Capacity)	V/Ah	48/480	48/400
6.4	Lead-acid battery capacity (Optional)	V/Ah	400	480
6.5	Max capacity for side change battery	Ah	480	480
6.6	Lead-acid battery weight	kg	760	700
6.7	Lithium battery voltage/ Nominal capacity	V/Ah	48/230	48/230
6.8	Lithium battery voltage/ Nominal capacity (Optional)	V/Ah	48/410	48/410
6.9	Lithium battery weight	kg	150	150
7.1	Hydraulic system pressure		21.5	21.5

Characteristics

1.1	Manufacturer	MiMA	MiMA	MiMA	MiMA	MiMA	MiMA
1.2	Model			MK20	MK25	MK20	MK25
	Technical code	MK20H	MK25H	MK20M	MK25M	MK20S	MK25S
1.3	Power type	Battery	Battery	Battery	Battery	Battery	Battery
1.4	Operation type	Seated	Seated	Seated	Seated	Seated	Seated
1.5	Load capacity	Q(kg)	2000	2500	2000	2500	2000
1.6	Load center	C(mm)	500	500	500	500	500
1.7	Front overhang	x(mm)	450	450	450	450	450
1.8	Wheelbase	y(mm)	1650	1650	1650	1650	1650

Tyre&Wheels

3.1	Tyre type	Pneumatic	Pneumatic	Pneumatic	Pneumatic	Pneumatic	Pneumatic
3.2	Tyre size, front	7.00-12-14PR	7.00×12-14PR	7.00-12-14PR	7.00-12-14PR	7.00-12-14PR	7.00-12-14PR
3.3	Tyre size, rear	18×7-8-14PR	18×7-8-14PR	18×7-8-14PR	18×7-8-14PR	18×7-8-14PR	18×7-8-14PR
3.4	Number of tyres, front/rear(x=drive wheel)	2X/2	2X/2	2X/2	2X/2	2X/2	2X/2
3.5	Tread(centre of tyre), front	b10(mm)	970	970	970	970	970
3.6	Tread(centre of tyre), rear	b11(mm)	960	960	960	960	960

Dimensions

4.1	Mast tilt angle, F/R	α/β(°)	6/10	6/10	6/10	6/10	6/10
4.2	Mast closed height	h1(mm)					
4.3	Free lift height	h2(mm)	150	150	150	150	150
4.4	Lift height	h3(mm)	3000	3000	3000	3000	3000
4.5	Mast extended height(with load backrest)	h4(mm)					
4.6	Overhead guard height	h6(mm)	2150	2150	2150	2150	2150
4.7	Seaf SIP point ground clearance	h7(mm)	1130	1130	1130	1130	1130
4.8	Height of traction pin from ground	h10(mm)	250	250	250	250	250
4.9	Overall length	L1(mm)	3500	3500	3500	3500	3500
4.10	Length to fork face	L2(mm)	2430	2430	2430	2430	2430
4.11	Overall width	b1/b2(mm)	1160/1140	1160/1140	1160/1140	1160/1140	1160/1140
4.12	Fork size	l/e/s(mm)	1070/122/40	1070/122/40	1070/122/40	1070/122/40	1070/122/40
4.13	Installation level(ISO2328)	2A	2A	2A	2A	2A	2A
4.14	Fork carriage width	b3(mm)	1040	1040	1040	1040	1040
4.15	Fork outside width	b5(mm)	1000 ~ 244	1000 ~ 244	1000 ~ 244	1000 ~ 244	1000 ~ 244
4.16	Ground clearance at mast, loaded	m1(mm)	120	120	120	120	120
4.17	Ground clearance at centre of wheelbase, loaded	m2(mm)	125	125	125	125	125
4.18	Min. stacking aisle width for pallet 1000×1200MM	mm	3754	3754	3754	3754	3754
4.19	Min. stacking aisle width for pallet 800×1200MM	mm	3950	3950	3950	3950	3950
4.20	Other stacking aisle width	mm					
4.21	Turning radius	Wa(mm)	2100	2100	2100	2100	2100

Performance

5.1	Travel speed, loaded/unloaded	km/h	18/19	18/19	14.5/15	14.5/15	12/13	12/13
5.2	Lifting speed, loaded/unloaded	mm/s	380/490	350/490	290/440	290/440	260/400	260/400
5.3	Lowering speed, loaded/unloaded	mm/s	400/400	400/400	400/400	400/400	400/400	400/400
5.4	Max. traction(Load/unload)	N	19000	19000	14000	14000	11000	11000
5.5	Gradeability (Load/unload S2-2min)	%(tanθ)	20/28	18/28	17/26	15/25	12/13	12/13
5.6	Acceleration time, loaded/unloaded(10m)	S						
5.7	Service brake	Hydraulic	Hydraulic	Hydraulic	Hydraulic	Hydraulic	Hydraulic	Hydraulic
	Parking brake	Mechanical	Mechanical	Mechanical	Mechanical	Mechanical	Mechanical	Mechanical

Drive

6.1	Drive motor rating S2=60	kw	AC16.6	AC16.6	AC11	AC11	AC11	AC11
6.2	Lift motor rating S3=15%	kw	AC21	AC21	AC12	AC12	AC12	AC12
6.3	Lead-acid battery voltage/ Nominal Capacity)	V/Ah			48/600	48/600	48/500	48/500
6.4	Lead-acid battery capacity (Optional)	V/Ah			500	500	600	600
6.5	Max capacity for side change battery	Ah			600	600	600	600
6.6	Lead-acid battery weight	kg			920	920	820	820
6.7	Lithium battery voltage/ Nominal capacity	V/Ah	80/300	80/300	48/300	48/300	48/300	48/300
6.8	Lithium battery voltage/ Nominal capacity (Optional)	V/Ah	80/410	80/410	48/460	48/460	48/460	48/460
6.9	Lithium battery weight	kg	173	173	173	173	173	173
7.1	Hydraulic system pressure		21.5	21.5	21.5	21.5	21.5	21.5

NOTE1: The driving speed, lifting and lowering speed, gradeability, and other parameters in the above table are tested from the standard model with ordinary duplex mast.
NOTE2: The standard model data would vary according to the configuration.

Characteristics

1.1	Manufacturer	MiMA	MiMA	MiMA	MiMA	MiMA	MiMA	
1.2	Model	MK30H	MK35H	MK38H	MK30M	MK35M	MK38M	
1.3	Power type	Battery	Battery	Battery	Battery	Battery	Battery	
1.4	Driving style	Seated	Seated	Seated	Seated	Seated	Seated	
1.5	Rated load capacity	Q(kg)	3000	3500	3800	3000	3500	3800
1.6	Load center	C(mm)	500	500	500	500	500	500
1.7	Front overhang	x(mm)	462	467	467	462	467	467
1.8	Wheelbase	y(mm)	1750	1750	1750	1750	1750	1750

Tyre&Wheels

3.1	Wheel type	Pneumatic	Pneumatic	Solid Rubber	Pneumatic	Pneumatic	Solid Rubber
3.2	Drive wheel size	28x9-15-14PR	28x9-15-14PR	28x9-15	28 x9-15-14PR	28x9-15-14PR	28x9-15
3.3	Load wheel size	18x7-8-14PR	18x7-8-14PR	18x7-8	18 x7-8-14PR	18x7-8-14PR	18x7-8
3.4	Number of wheels,front/rear(x=drive wheel)	2X/2	2X/2	2X/2	2X/2	2X/2	2X/2
3.5	Wheel tread,drive side	b10(mm)	1040	1040	1040	1040	1040
3.6	Wheel tread,load side	b11(mm)	990	990	990	990	990

Dimensions

4.1	Mast tilting angle, F/R	α/β(°)	6/10	6/10	6/10	6/10	6/10	6/10
4.2	Mast closed height	h1(mm)						
4.3	Free lift height	h2(mm)	155	160	160	155	160	160
4.4	Lift height	h3(mm)	3000	3000	3000	3000	3000	3000
4.5	Mast extended height with load backrest	h4(mm)						
4.6	Overhead guard height	h6(mm)	2180	2180	2180	2180	2180	2180
4.7	Seaf SIP point ground clearance	h7(mm)	1135	1135	1135	1135	1135	1135
4.8	Height of traction pin from the ground	h10(mm)	330	330	330	330	330	330
4.9	Overall length	L1(mm)	3617	3622	3622	3617	3622	3622
4.10	Length to fork face	L2(mm)	2547	2552	2552	2547	2552	2552
4.11	Overall width	b1/b2(mm)	1260/1240	1260/1240	1260/1240	1260/1240	1260/1240	1260/1240
4.12	Fork size	l/e/s(mm)	1070/125/45	1070/125/50	1070/125/50	1070/125/45	1070/125/50	1070/125/50
4.13	Installation level		3A	3A	3A	3A	3A	3A
4.14	Fork carriage width	b3(mm)	1100	1100	1100	1100	1100	1100
4.15	Fork outside width	b5(mm)	1060~250	1060~250	1060~250	1060~250	1060~250	1060~250
4.16	Ground clearance at mast,loaded	m1(mm)	130	130	130	130	130	130
4.17	Ground clearance at centre of wheelbase ,loaded	m2(mm)	135	135	135	135	135	135
4.18	Min. stacking aisle width for pallet 1000*1200	mm	3884	3889	3889	3884	3889	3889
4.19	Min. stacking aisle width for pallet 800*1200	mm	4082	4087	4087	4082	4087	4087
4.20	Other stacking aisle width	mm						
4.21	Minimum turning radius	Wa(mm)	2220	2220	2220	2220	2220	2220

Performance

5.1	Travel speed, loaded/unloaded	km/h	19/20	18/19	17/18	15/15	14/15	13/15
5.2	Lifting speed, loaded/unloaded	mm/s	400/520	380/520	360/520	290/440	280/440	270/440
5.3	Lowering speed, loaded/unloaded	mm/s	400/400	400/400	400/400	400/400	400/400	400/400
5.4	Max. traction(Load/unload)	N	19500	19500	19500	17000	17000	17000
5.5	Gradeability (Load/unload S2-2min)	%(tanθ)	20/28	18/28	15/28	17/26	15/23	15/20
5.6	Acceleration time, loaded/unloaded(10m)	S						
5.7	Service brake		Hydraulic	Hydraulic	Hydraulic	Hydraulic	Hydraulic	Hydraulic
	Parking brake		Mechanical	Mechanical	Mechanical	Mechanical	Mechanical	Mechanical

Drive

6.1	Drive motor rating S2=60	kw	AC16.6	AC16.6	AC16.6	AC15	AC15	AC15
6.2	Lift motor rating S3=15%	kw	AC25.5	AC25.5	AC25.5	AC16	AC16	AC16
6.3	Lead-acid battery voltage/capacity(standard)	V/Ah	/	/	/	80/500	80/500	80/500
6.4	Lead-acid battery capacity(optional)	Ah	/	/	/	400	400	400
6.5	Max capacity for side change battery	Ah	/	/	/	400	400	400
6.6	Lead-acid battery weight(standard)	kg	/	/	/	1320	1320	1320
6.7	Lithium battery voltage/capacity(standard)	V/Ah	80/400	80/400	80/400	80/300	80/300	80/300
6.8	Lithium battery voltage/capacity(optional)	V/Ah	80/600、300	80/600、300	80/600、300	80/600、400	80/600、400	80/600、400
6.9	Lithium Battery weight	kg	247	247	247	173	173	173
7.1	Hydraulic system pressure	Mpa	21.5	21.5	21.5	21.5	21.5	21.5

NOTE: The driving speed, lifting and lowering speed, gradeability, and other parameters in the above table are tested from the standard model with ordinary duplex mast.

NOTE: The standard model data would vary according to the configuration.

Characteristics

1.1	Manufacturer	MiMA	MiMA	MiMA	MiMA	
1.2	Model	MK30S	MK35S	MK38S	MK40S	
1.3	Power type	Battery	Battery	Battery	Battery	
1.4	Driving style	Seated	Seated	Seated	Seated	
1.5	Rated load capacity	Q(kg)	3000	3500	3800	4000
1.6	Load center	C(mm)	500	500	500	500
1.7	Front overhang	x(mm)	462	467	467	467
1.8	Wheelbase	y(mm)	1750	1750	1750	1750

Weights

2.1	Service weight(incl.battery)	kg	4798/3678	5136/4016	5466/4336	5644/4524
-----	------------------------------	----	-----------	-----------	-----------	-----------

Tyre&Wheels

3.1	Wheel type	Pneumatic	Pneumatic	Solid Rubber	Solid Rubber
3.2	Drive wheel size	28x9-15-14PR	28x9-15-14PR	28x9-15	28x9-15
3.3	Load wheel size	18x7-8-14PR	18x7-8-14PR	18x7-8	18x7-8
3.4	Number of wheels,front/rear(x=drive wheel)	2X/2	2X/2	2X/2	2X/2
3.5	Wheel tread,drive side	b10(mm)	1040	1040	1040
3.6	Wheel tread,load side	b11(mm)	990	990	990

Dimensions

4.1	Mast tilting angle, F/R	α/β(°)	6/10	6/10	6/10	6/10
4.2	Mast closed height	h1(mm)				
4.3	Free lift height	h2(mm)	155	160	160	160
4.4	Lift height	h3(mm)	3000	3000	3000	3000
4.5	Mast extended height with load backrest	h4(mm)				
4.6	Overhead guard height	h6(mm)	2180	2180	2180	2180
4.7	Seat height	h7(mm)	1135	1135	1135	1135
4.8	Height of traction pin from the ground	h10(mm)	330	330	330	330
4.9	Overall length	L1(mm)	3617	3622	3622	3622
4.10	Length to fork face	L2(mm)	2547	2552	2552	2552
4.11	Overall width	b1/b2(mm)	1260/1240	1260/1240	1260/1240	1260/1240
4.12	Fork size	l/e/s(mm)	1070/125/45	1070/125/50	1070/125/50	1070/125/50
4.13	Installation level		3A	3A	3A	3A
4.14	Fork carriage width	b3(mm)	1100	1100	1100	1100
4.15	Fork outside width	b5(mm)	1060~250	1060~250	1060~250	1060~250
4.16	Ground clearance at mast, loaded	m1(mm)	130	130	130	130
4.17	Ground clearance at centre of wheelbase loaded	m2(mm)	135	135	135	135
4.18	Min. stacking aisle width for pallet 1000*1200MM	mm	3884	3889	3889	3889
4.19	Min. stacking aisle width For pallet 8001200MM	mm	4082	4087	4087	4087
4.20	Other stacking aisle width	mm				
4.21	Minimum turning radius	Wa(mm)	2220	2220	2220	2220

Performance

5.1	Travel speed, loaded/unloaded	km/h	12/13	12/13	12/13	12/13
5.2	Lifting speed, loaded/unloaded	mm/s	260/400	260/400	250/400	250/400
5.3	Lowering speed, loaded/unloaded	mm/s	400/400	400/400	400/400	400/400
5.4	Max. traction(Load/unload)	N	16000	16000	16000	16000
5.5	Gradeability (Load/unload S2-2min)	%(tanθ)	12/13	12/13	12/13	10/13
5.6	Acceleration time, loaded/unloaded(10m)	S				
5.7	Service brake		Hydraulic	Hydraulic	Hydraulic	Hydraulic
	Parking brake		Mechanical	Mechanical	Mechanical	Mechanical

Drive

6.1	Drive motor rating S2=60	kw	AC15	AC15	AC15	AC15
6.2	Lift motor rating S3=15%	kw	AC16	AC16	AC16	AC16
6.3	Lead-acid battery voltage/capacity(standard)	V/Ah	80/400	80/400	80/400	80/400
6.4	Lead-acid battery capacity(optional)	V/Ah	80/500	80/500	80/500	80/500
6.5	Max capacity for side change battery	V/Ah	80/400	80/400	80/400	80/400
6.6	Lead-acid battery weight(standard)	kg	1120	1120	1120	1120
6.7	Lithium battery voltage/capacity(standard)	V/Ah	80/300	80/300	80/300	80/300
6.8	Lithium battery voltage/capacity(optional)	V/Ah	80/600、400	80/600、400	80/600、400	80/600、400
6.9	Lithium battery weight(standard)	kg	173	173	173	173
7.1	Hydraulic system pressure	Mpa	21.5	21.5	21.5	21.5

NOTE: The driving speed, lifting and lowering speed, gradeability, and other parameters in the above table are tested from the standard model with ordinary duplex mast.

NOTE: The standard model data would vary according to the configuration.

Characteristics

1.1	Manufacturer	MIMA	MIMA	MIMA	MiMA	MIMA
1.2	Model	MK15	MK20	MK25	MK30	MK35
	Technical code	MK-L15	MK-L20	MK-L25	MK-L30	MK-L35
1.3	Power type	Battery	Battery	Battery	Battery	Battery
1.4	Operation type	Seated	Seated	Seated	Seated	Seated
1.5	Load capacity	Q(kg)	1500	2000	2500	3000
1.6	Load center	C(mm)	500	500	500	500
1.7	Front overhang	x(mm)	402	450	450	462
1.8	Wheelbase	y(mm)	1500	1650	1650	1750

Tyre&Wheels

3.1	Tyre type	Pneumatic	Pneumatic	Pneumatic	Pneumatic	Pneumatic
3.2	Tyre size, front	6.50×10-10PR	7.00-12-14PR	7.00-12-14PR	28×9-15-14PR	28×9-15-14PR
3.3	Tyre size, rear	16×6-8-10PR	18×7-8-14PR	18×7-8-14PR	18×7-8-14PR	18×7-8-14PR
3.4	Number of tyres, front/rear(x=drive wheel)	2X/2	2X/2	2X/2	2X/2	2X/2
3.5	Tread(centre of tyre), front	b10(mm)	950	970	970	1040
3.6	Tread(centre of tyre), rear	b11(mm)	900	960	960	990

Dimensions

4.1	Mast tilt angle, F/R	α/β(°)	6/10	6/10	6/10	6/10
4.2	Mast closed height	h1(mm)	Refer to the mast specification			
4.3	Free lift height	h2(mm)	145	150	150	155
4.4	Lift height	h3(mm)	3000	3000	3000	3000
4.5	Mast extended height(with load backrest)	h4(mm)	Refer to the mast specification			
4.6	Overhead guard height	h6(mm)	2125	2150	2150	2180
4.7	Seaf SIP point ground clearance	h7(mm)	1100	1130	1130	1135
4.8	Height of traction pin from ground	h10(mm)	260	250	250	330
4.9	Overall length	L1(mm)	3297	3500	3500	3617
4.10	Length to fork face	L2(mm)	2227	2430	2430	2547
4.11	Overall width	b1/b2(mm)	1120	1160/1140	1160/1140	1260/1240
4.12	Fork size	l/e/s(mm)	1070/100/35	1070/122/40	1070/122/40	1070/125/45
4.13	Installation level(ISO2328)	2A	2A	2A	3A	3A
4.14	Fork carriage width	b3(mm)	1040	1040	1040	1100
4.15	Fork outside width	b5(mm)	1040~200	1000~244	1000~244	1060~250
4.16	Ground clearance at mast, loaded	m1(mm)	100	120	120	130
4.17	Ground clearance at centre of wheelbase, loaded	m2(mm)	110	125	125	135
4.18	Min. stacking aisle width for pallet 1000*1200MM	mm	3595	3754	3754	3884
4.19	Min. stacking aisle width for pallet 800*1200MM	mm	3790	3950	3950	4082
4.20	Other stacking aisle width	mm				
4.21	Turning radius	Wa(mm)	1940	2100	2100	2220

Performance

5.1	Travel speed, loaded/unloaded	km/h	12/13	12/13	12/13	12/13
5.2	Lifting speed, loaded/unloaded	mm/s	335/400	260/400	260/400	260/400
5.3	Lowering speed, loaded/unloaded	mm/s	400/400	400/400	400/400	400/400
5.4	Max. traction(Load/unload)	N	9500	11000	11000	16000
5.5	Gradeability (Load/unload S2-2min)	%(tanθ)	12/13	12/13	12/13	12/13
5.6	Acceleration time, loaded/unloaded(10m)	S				
5.7	Service brake	Hydraulic	Hydraulic	Hydraulic	Hydraulic	Hydraulic
	Parking brake	Mechanical	Mechanical	Mechanical	Mechanical	Mechanical

Drive

6.1	Drive motor rating S2=60	kw	AC4	AC4	AC4	AC4
6.2	Lift motor rating S3=15%	kw	AC10.6	AC12	AC12	AC16
6.3	Lead-acid battery voltage/ Nominal Capacity)	V/Ah	48/400	48/500	48/500	80/400
6.4	Lead-acid battery capacity (Optional)	V/Ah	480	600	600	80/500
6.5	Max capacity for side change battery	Ah	480	600	600	80/400
6.6	Lead-acid battery weight	kg	700	820	820	1120
6.7	Lithium battery voltage/ Nominal capacity	V/Ah	48/230	48/300	48/300	80/300
6.8	Lithium battery voltage/ Nominal capacity (Optional)	V/Ah	48/410	48/460	48/460	80/600、400
6.9	Lithium battery weight	kg	150	173	173	173
7.1	Hydraulic system pressure		21.5	21.5	21.5	21.5

MAST SPECIFICATION

Mast Type	MK15					MK20-25					MK30-40									
	Mast Model	Lifting Height	Mast Closed Height	Mast Extended Height	Free Lifting Height (with load backrest)	Mast Model	Lifting Height	Mast Closed Height	Mast Extended Height	Free Lifting Height (with load backrest)	Mast Model	Lifting Height	Mast Closed Height	Mast Extended Height	Free Lifting Height (with load backrest)					
	mm					mm					mm									
Duplex Mast	Model>MK				15	Model>MK				20	25	Model>MK				30	35	38	40	
	60L	6000	3610	7060	145	60L	6000	3630	7060	150	150	60L	6000	3745	7190	155	160			
	55L	5500	3360	6560	145	55L	5500	3380	6560	150	150	55L	5500	3495	6690	155	160			
	50L	5000	3060	6060	145	50L	5000	3080	6060	150	150	50L	5000	3195	6190	155	160			
	45L	4500	2810	5560	145	45L	4500	2830	5560	150	150	45L	4500	2945	5940	155	160			
	40L	4000	2560	5060	145	40L	4000	2580	5060	150	150	40L	4000	2695	5190	155	160	160	160	
	37L	3700	2360	4760	145	37L	3700	2380	4760	150	150	37L	3700	2495	4890	155	160	160	160	
	35L	3500	2260	4560	145	35L	3500	2280	4560	150	150	35L	3500	2395	4690	155	160	160	160	
	33L	3300	2160	4360	145	33L	3300	2180	4360	150	150	33L	3300	2295	4490	155	160	160	160	
	30L	3000	2010	4060	145	30L	3000	2030	4060	150	150	30L	3000	2145	4190	155	160	160	160	
	27L	2700	1860	3760	145	27L	2700	1880	3760	150	150	27L	2700	1995	3890	155	160	160	160	
	25L	2500	1760	3560	145	25L	2500	1780	3560	150	150	25L	2500	1895	3690	155	160	160	160	
	20L	2000	1510	3060	145	20L	2000	1530	3060	150	150	20L	2000	1645	3190	155	160	160	160	
	Duplex Full Free Mast	60Q	6000	3610	7060	2545	60Q	6000	3630	7199	2560	2560	60Q	6000	3745	7199	2540	2545		
55Q		5500	3360	6560	2295	55Q	5500	3380	6699	2310	2310	55Q	5500	3495	6699	2290	2295			
50Q		5000	3060	6060	1995	50Q	5000	3080	6199	2010	2010	50Q	5000	3195	6199	1990	1995			
45Q		4500	2810	5560	1745	45Q	4500	2830	5699	1760	1760	45Q	4500	2945	5699	1740	1745			
40Q		4000	2560	5060	1495	40Q	4000	2580	5199	1510	1510	40Q	4000	2695	5199	1490	1495	1495	1495	
37Q		3700	2360	4760	1295	37Q	3700	2380	4899	1310	1310	37Q	3700	2495	4899	1290	1295	1295	1295	
35Q		3500	2260	4560	1195	35Q	3500	2280	4699	1210	1210	35Q	3500	2395	4699	1190	1195	1195	1195	
33Q		3300	2160	4360	1095	33Q	3300	2180	4499	1110	1110	33Q	3300	2295	4499	1090	1095	1095	1095	
30Q		3000	2010	4060	945	30Q	3000	2030	4199	960	960	30Q	3000	2145	4199	940	945	945	945	
27Q		2700	1860	3760	795	27Q	2700	1880	3899	810	810	27Q	2700	1995	3899	790	795	795	795	
25Q		2500	1760	3560	695	25Q	2500	1780	3699	710	710	25Q	2500	1895	3699	690	695	695	695	
20Q		2000	1510	3060	445	20Q	2000	1530	3069	460	460	20Q	2000	1645	3199	440	445	445	445	
Triplex Full Free Mast		70T	7000	2943	8060	1878	70T	7000	2963	8060	1893	1893	70T	7000	3008	8190	1803	1808		
		68T	6800	2877	7860	1812	68T	6800	2897	7860	1827	1827	68T	6800	2942	7990	1737	1742		
	65T	6500	2777	7560	1712	65T	6500	2797	7560	1727	1727	65T	6500	2842	7690	1637	1642			
	63T	6300	2710	7360	1645	63T	6300	2730	7360	1660	1660	63T	6300	2775	7490	1570	1575			
	60T	6000	2610	7060	1545	60T	6000	2630	7060	1560	1560	60T	6000	2675	7190	1470	1475	1475	1475	
	55T	5500	2443	6560	1378	55T	5500	2463	6560	1393	1393	55T	5500	2508	6690	1303	1308	1308	1308	
	50T	5000	2277	6060	1212	50T	5000	2297	6060	1227	1227	50T	5000	2342	6190	1137	1142	1142	1142	
	48T	4800	2210	5860	1145	48T	4800	2230	5860	1160	1160	48T	4800	2275	5990	1070	1075	1075	1075	
	47T	4700	2177	5760	1112	47T	4700	2197	5760	1127	1127	47T	4700	2242	5890	1037	1042	1042	1042	
	45T	4500	2110	5560	1045	45T	4500	2130	5560	1060	1060	45T	4500	2175	5690	970	975	975	975	
	40T	4000	1943	5060	878	40T	4000	1963	5060	893	893	40T	4000	2008	5190	803	808	808	808	
	36T	3600	1810	4660	745	36T	3600	1830	4660	760	760	36T	3600	1875	4790	670	675	675	675	

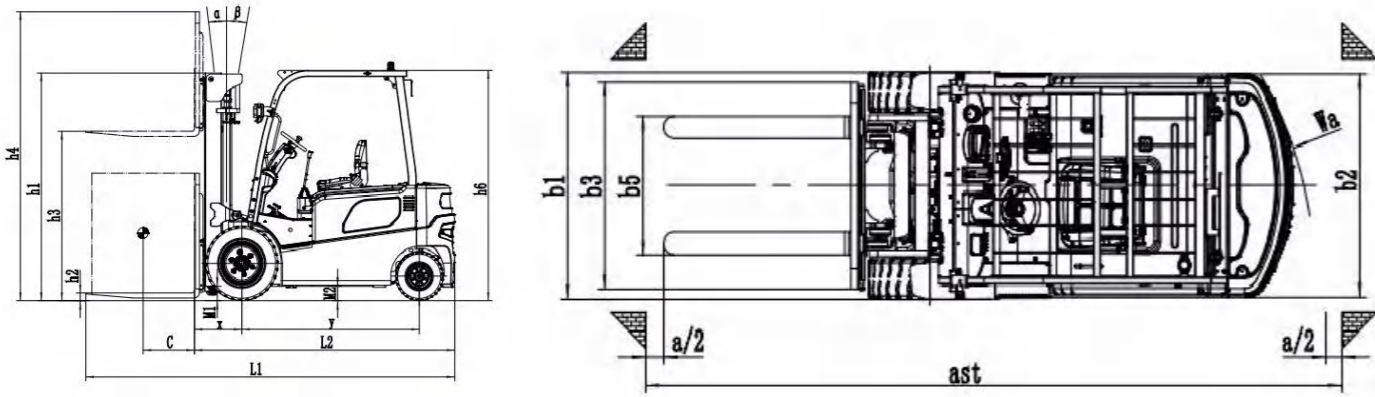
Standard configuration

Inmotion controller
1070mm forks
Albright contactor
Emergency stop
Load backrest
OPS system
Reverse buzzer
Wide-angle rear-view mirror
Adjustable seat and steering wheel
Fan (H-series)
USB (H&M-series)
Multi-valve joysticks operation
Lead-acid battery
LED working lights
Silent warning light
Full AC system
English instrument
REMA /Anderson power connector
Button reversing armrest (H&M)
Tool box

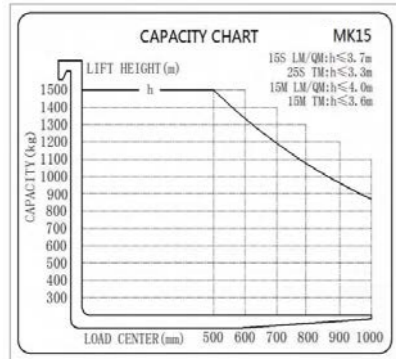
Optional configuration

Curtis / ZAPI Controller
Li-ION battery
Customized color
Widen and heighten the load backrest
Turning speed limit
NFC magnetic card
Proportional fingertips operation
Automatic water replenishment system
Cold storage
Explosion proof vehicle
Long forks
Side shifter
Forks positioner
Various attachment
Line-shape LED lights
Side pull battery
Extinguisher
Seat belt switch

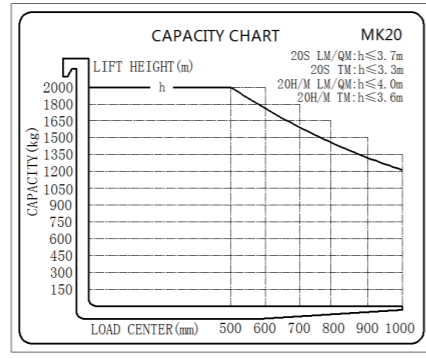
2D VIEW



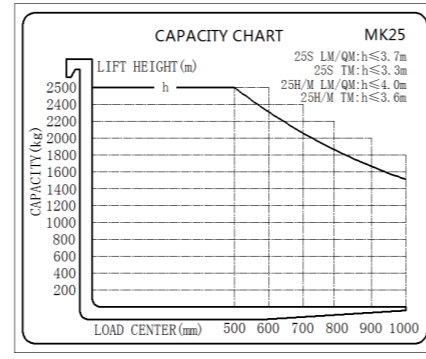
CAPACITY CHART



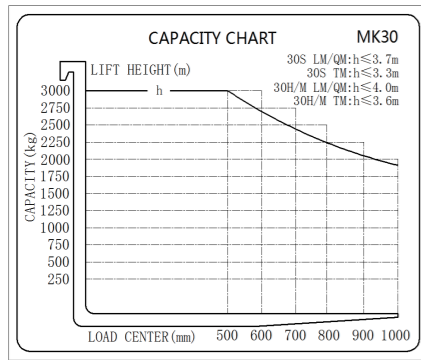
MK15



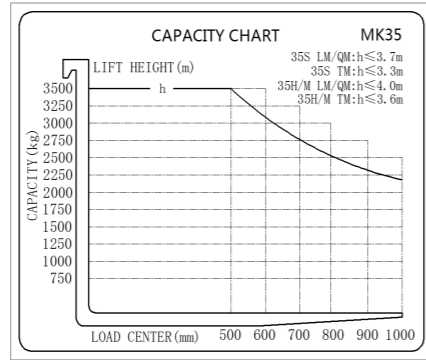
MK20



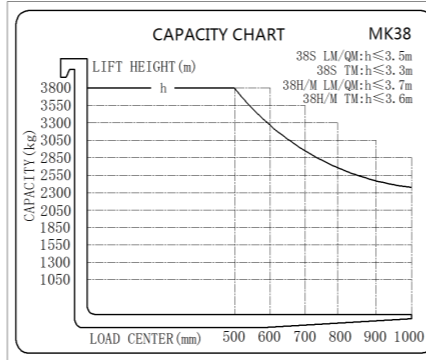
MK25



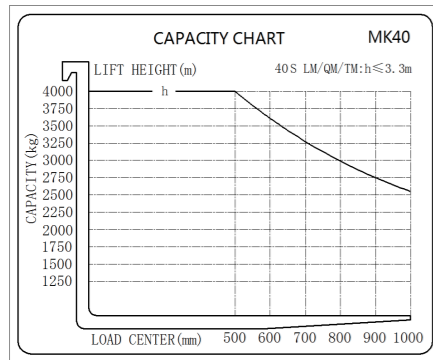
MK30



MK35



MK38



MK40

1994
 Nearly 30 years of forklift history

600+
 Employees

50+
 National invention patents

72000m²
 Total area

Founded in 1994, Banyitong Science & Technology Developing Co., Ltd. is a high-tech enterprise specializing in designing and manufacturing high-end electric material handling equipment. The company covers an area of 72,000 square meters with 600 employees. We are one of the first batch of national "SRDI"(Specialization, Refinement, Differentiation, Innovation)small giant enterprises in Anhui Province, with a highly qualified R&D team of over 100 engineers. We're also an industrial technology R&D center in Anhui province.

"MiMA", our product brand, is interpreted as Min. Space, Max. Performance! We aim to create more excellent value for customers through our professional products and realize more fantastic dreams together with our customers.

